

# Lancashire School Information Profile (LSIP - Secondary)

## The Hollins Technology College

Lancashire School Number: 11102

DCSF Number: 888-4195

**Confidential to School**

**2007/08 Version 1**

**Section 1 - Pupil Characteristics - 16 September**

**Section 2 - Attainment - 5 December 2008**

This LA-generated report is for use by schools and internal LA use. Use of this data must comply with the Data Protection Act 1998 and is supplied solely for the purpose of school improvement. Users must ensure that the data is processed securely, is used only for its intended purpose and is not subject to any unauthorised use or disclosure. Wider sharing of the report is at the discretion of the school. It should be treated as a draft document. Schools should carefully check the information included as this report is compiled from a variety of sources. Whilst considerable effort has been made to ensure the information is correct there may be instances where the source data is inaccurate. At present some of the 2007/08 information has not been validated due to its provisional nature. To feed back any inaccurate information within this report, please contact the Professional Support Team.

Directorate for Children and Young People

Report produced by the  
Assessment Support/Professional Support Teams,  
Tel: (01772) 531555 Fax: (01772) 531525  
Email: pst@ed.lancsc.gov.uk



INVESTOR IN PEOPLE



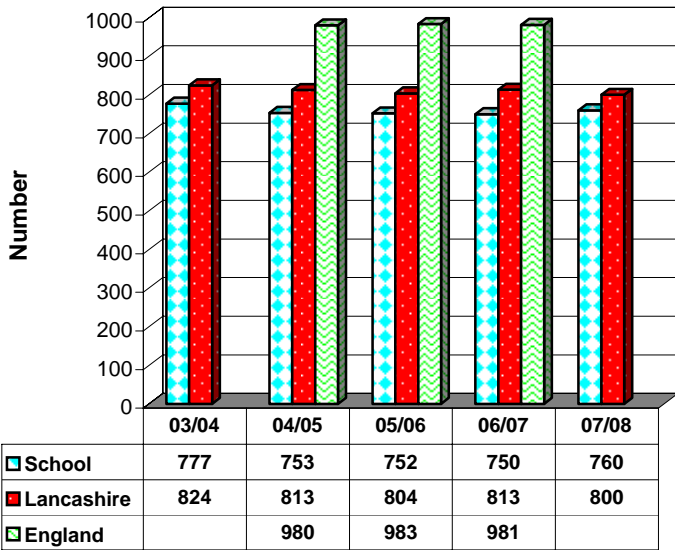
2006-2007  
Positive Youth Engagement  
(in the community and  
democratic process)  
2007-2008  
Healthy Schools  
2008-2009  
Improving Accessibility

# Pupil Characteristics

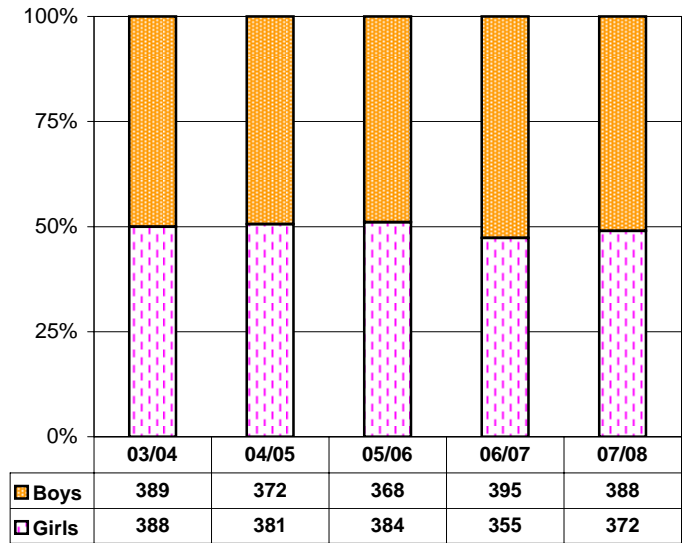
(See also Interpretation and Technical Guidance Notes)

11102 The Hollins Technology College

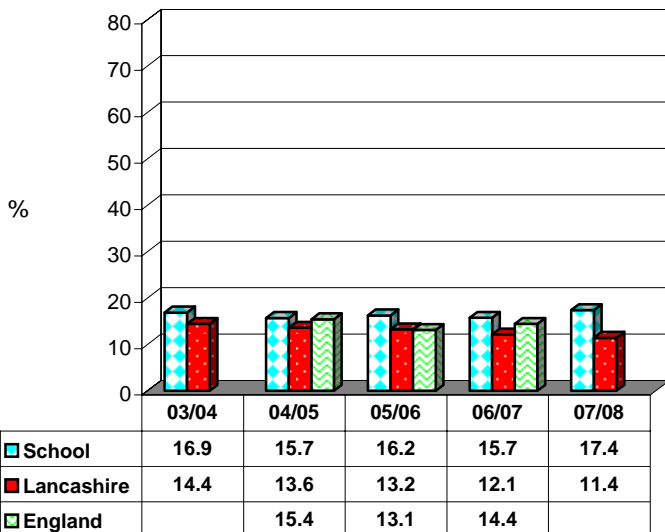
### Number on Roll



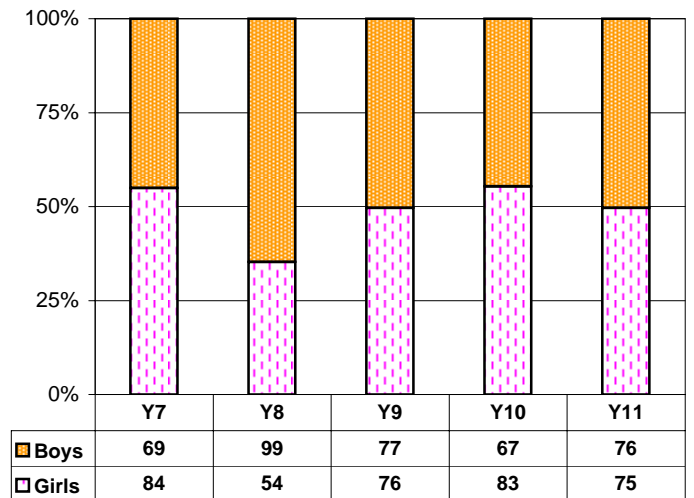
### Number and Percentage by Gender- All Pupils



### Percentage of Pupils Eligible for Free School Meals



### Number & Percentage by Gender - By Year Group 2007/08



**Note:** See Technical Guidance Notes for information sources.

Blank boxes indicate that the information was not available at the time of publication.

# Pupil Characteristics

(See also Interpretation and Technical Guidance Notes)

11102 The Hollins Technology College

School Year (2007/08)	NOR		No. Joined Late		% of Year Group Joined Late		% of School Joined Late		No. Left the School in the last School Year		% of Year Group Left the School in the last School Year		% of School Left the School in the last School Year	
	School	Lancs Ave	School	Lancs Ave	School	Lancs Ave	School	Lancs Ave	School	Lancs Ave	School	Lancs Ave	School	Lancs Ave
Year 7	153	155	4	2	2.6	1.2	0.5	0.2	N/A	N/A	N/A	N/A	N/A	N/A
Year 8	153	154	7	8	4.6	5.0	0.9	1.0	5	7	3.3	4.3	0.7	0.8
Year 9	153	161	24	28	15.7	17.6	3.2	3.5	7	8	4.6	4.9	0.9	1.0
Year 10	150	163	21	32	14.0	19.6	2.8	4.0	6	7	4.0	4.1	0.8	0.8
Year 11	151	167	12	32	7.9	19.4	1.6	4.0	1	5	0.7	2.9	0.1	0.6
<b>Total</b>	760	800	68	102			8.9	12.8	19	26			2.5	3.3

**Note:** See Technical Guidance Notes for information sources.

## Pupil Characteristics

(See also Interpretation and Technical Guidance Notes)

11102 The Hollins Technology College

Exclusions															
Year	NOR	No. Perm't		Perm't (per 100 pupils)			No. Fixed Term Excl		Fixed Term Excl (per 100 pupils)			No. Days Fixed Term		Days Excl (per 100 pupils)	
		Sch	Lancs	Sch	Lancs	Eng	Sch	Lancs	Sch	Lancs	Eng	Sch	Lancs	Sch	Lancs
2003/04	777	5	323	0.64	0.50	0.25	119	8602	15.32	13.40	8.66	337	36393	43.4	56.6
2004/05	753	7	252	0.93	0.40	0.24	69	8145	9.16	12.80	9.94	315	30908	41.8	48.7
2005/06	752	3	298	0.40	0.50	0.24	97	9412	12.90	15.00	10.40	318	35950	42.3	57.2
2006/07	750	1	235	0.13	0.30	0.22	120	8112	16.00	11.70	10.83	400	29089	53.3	42.1
2007/08	760	3	248	0.39	0.40		60	6295	7.89	9.40		213	18544	28.0	27.6

Absence (In number of sessions - 1 Session = a half day)													
<i>Pupils = Number of compulsory school age pupils</i>													
Year	% Total Absence		% Authorised Sessions			% Unauthorised Sessions			Total Pupils	Number of Pupils Authorised	% Pupils Authorised	Number of Pupils Unauthorised	% Pupils Unauthorised
	Target	Actual	Sch	Lancs	Eng	Sch	Lancs	Eng					
2003/04		8.8	7.3	7.3	6.9	1.5	0.9	1.1	795	756	95.1	239	30.1
2004/05	9.1	8.2	7.1	6.9	6.6	1.1	0.9	1.2	767	713	93.0	187	24.4
2005/06	9.1	8.8	6.0	6.8	6.7	2.7	1.2	1.2	779	724	92.9	308	39.5
2006/07	9.1	8.8	6.9	6.2	6.3	1.9	1.3	1.5	767				
2007/08	9.1												
2008/09	8.5												

**Note: See Technical Guidance Notes for information sources.**

## Pupil Characteristics

(See also Interpretation and Technical Guidance Notes)

11102 The Hollins Technology College

<b>Pupils by Ethnic Group</b> (Blank indicates none)																					
Year	WBRI	WIRI	WIRT	WROM	WOTH	MWBC	MWBA	MWAS	MOTH	AIND	APKN	ABAN	AOTH	BCRB	BAFR	BOTH	CHNE	REFU	NOBT	OOH	Total Pupils Classified
	2003/04	692	1	1		1				1	1	62	12	1				1	2		
2004/05	665	1	1		2				2	2	63	13					1	3			753
2005/06	642	2			2			1	3	2	79	16						4	1		752
2006/07	634	3			2			2	2	2	87	14	1				1	2			750
2007/08	622	1			2			3	1	1	104	20	2				1	3			760

<b>Number of Pupils by First Language</b> (Blank indicates none)							
Year	ENG	ENB	OTH	OTB	REF	NOT	Total Pupils Classified
	2003/04	703		74			
2004/05	672	5	76				753
2005/06	651	7	62	32			752
2006/07	647	2	46	55			750
2007/08	632	1	58	69			760

<b>Children in Care (CiC)</b>										
Year	NOR	Total Number CiC	% CiC		Number CiC with SEN Statement	% CiC with SEN Statement		Number CiC with SEN No Statement	% CiC with SEN No Statement	
			Sch	Lancs		Sch	Lancs		Sch	Lancs
2003/04	777	9	1.2	0.4	1	11.11	10.4	2	22.2	36.3
2004/05	753	10	1.3	0.4	1	10.00	10.4	3	30.0	39.4
2005/06	752	7	0.9	0.5	1	14.29	11.1	2	28.6	37.8
2006/07	750	6	0.8	0.6	1	16.67	11.7	5	83.3	40.8
2007/08	760	6	0.8	0.6	1	16.67	14.1	5	83.3	47.0

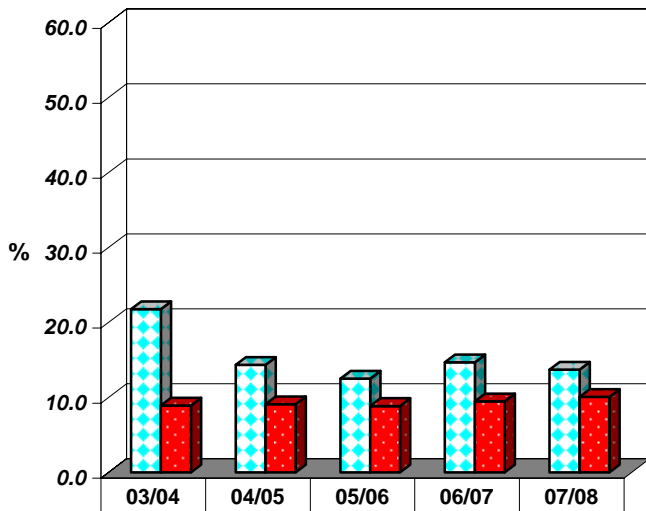
**Note: See Technical Guidance Notes for information sources.  
CiC data correct as of PLASC 2008.**

# Pupil Characteristics

(See also Interpretation and Technical Guidance Notes)

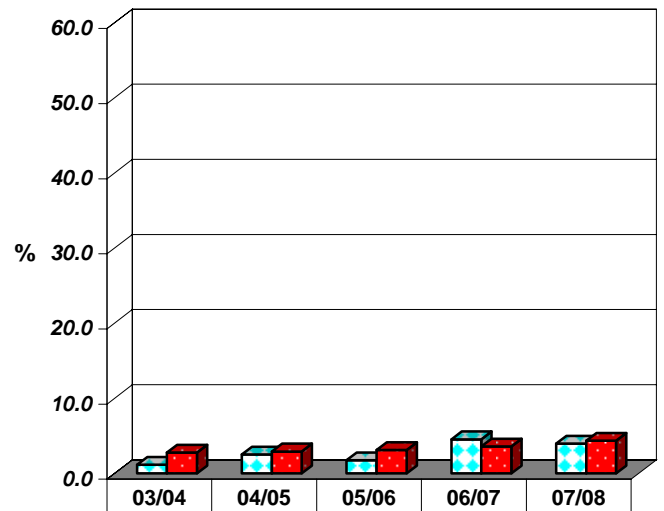
11102 The Hollins Technology College

**SEN: Percentage of Pupils, SCHOOL ACTION**



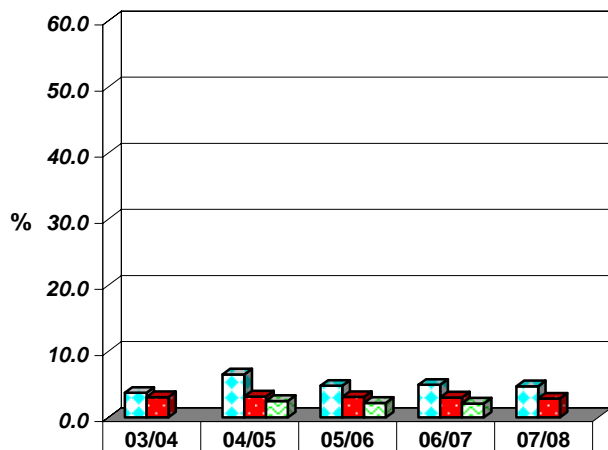
School	21.8	14.3	12.5	14.7	13.7
Lancashire	8.9	9.1	8.8	9.5	10.1

**SEN: Percentage of Pupils, SCHOOL ACTION PLUS**



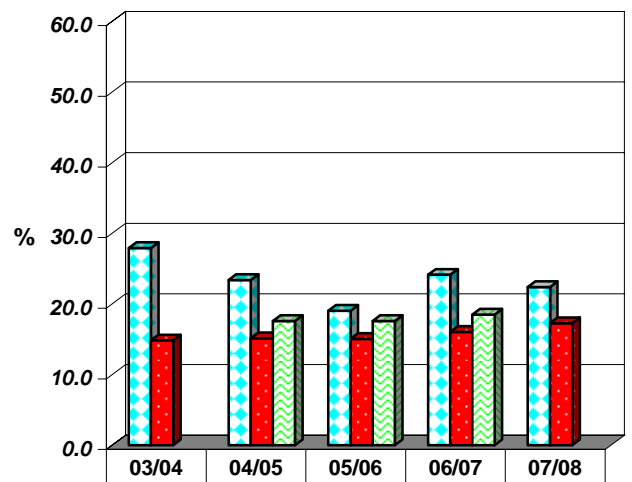
School	1.2	2.5	1.7	4.5	3.9
Lancashire	2.8	2.9	3.1	3.6	4.3

**SEN: Percentage of Pupils with STATEMENTS**



School	3.7	6.5	4.8	4.9	4.7
Lancashire	3.1	3.2	3.1	3.0	2.9
England		2.5	2.2	2.1	

**SEN: Percentage of Pupils with SEN**



School	27.9	23.4	19.0	24.1	22.4
Lancashire	14.8	15.1	15.1	16.0	17.3
England		17.6	17.6	18.5	

**Note:** See Technical Guidance Notes for information sources.  
Blank boxes indicate that the information was not available at the time of publication.

Total number on roll (07/08)

760

		% Pupil	Mult	Edu	Inc	Emp	Health	Hou <sup>5</sup>	Crime	Liv En
Total Percentage Matched		100.00								
Weighted by NOR by Ward factor for matched pupils			D	D	D	D	E	A	C	D
Percentile ranking by NOR by Ward for matched pupils			69	67	62	74	80	24	56	72
Invalid postcodes		0.00								
SOA	Ward	% Pupil	Mult	Edu	Inc	Emp	Health	Hou <sup>5</sup>	Crime	Liv En
OAGG	SOA with fewer than 10 pupils	13.29	D	D	D	D	E	A	C	D
HY 9	Baxenden	8.68	B	B	A	B	C	C	C	C
HY 6	Barnfield	7.37	E	D	E	E	E	A	D	E
HY 53	Spring Hill	7.11	E*	E	E*	E	E	A	D	E*
HY 7	Baxenden	7.11	B	B	A	C	D	C	A	B
HY 8	Baxenden	6.32	A	B	A	B	C	B	A	A
HY 4	Barnfield	5.66	D	C	D	D	E	A*	C	D
HY 11	Central	5.00	E*	E*	E*	E	E*	A	D	E*
HY 5	Barnfield	4.74	E*	E	E*	E*	E*	A	E	E*
HY 38	Peel	4.74	D	E	D	D	E	A*	C	E*
HY 37	Peel	3.95	E	E	E	E	E	A*	E	E*
HY 22	Huncoat	3.68	C	D	C	D	E	B	B	D
HY 20	Huncoat	3.29	E	D	E	E*	E*	D	B	C
HY 36	Peel	2.76	E	E	E	E	E	A*	E	E*
HY 10	Central	2.50	E*	E*	E*	E*	E*	A	E	E*
HY 21	Huncoat	2.50	C	C	B	C	C	B	C	C
RO 41	Worsley	2.37	D	C	C	D	D	E	E	E
HY 26	Milnshaw	1.97	C	D	C	D	D	A*	C	E
HY 52	Spring Hill	1.97	E	E	E	E	E*	A	D	E*
HY 51	Spring Hill	1.84	E*	E*	E*	E*	E*	A	C	D
HY 12	Central	1.58	E*	E*	E*	E*	E*	A	D	E*
HY 28	Milnshaw	1.58	E	E	E	E	E	A	C	D

Notes: 1) Use this page in conjunction with the attached map which displays pupils' locations.

2) The SOA codes are NOT Postcodes

3) The SOA code OAGG is the aggregate of all the SOAs where fewer than 5 pupils reside for Nursery, Primary and 6th Form and 10 pupils for Secondary.

4) A Super Output Area is a geographical area used in the 2001 census, for a more detailed description refer to the guidance notes.

5) The housing domain measures access to housing and key local services. Deprived households without ready access to transport may tend to live in close proximity to key public services, hence the most deprived may grade A\* under this indicator.

6) The analysis for 2007/08 has been completed using the revised IMD 2007. This may result in schools seeing changes in the level of deprivation shown for the SOAs included in this analysis.

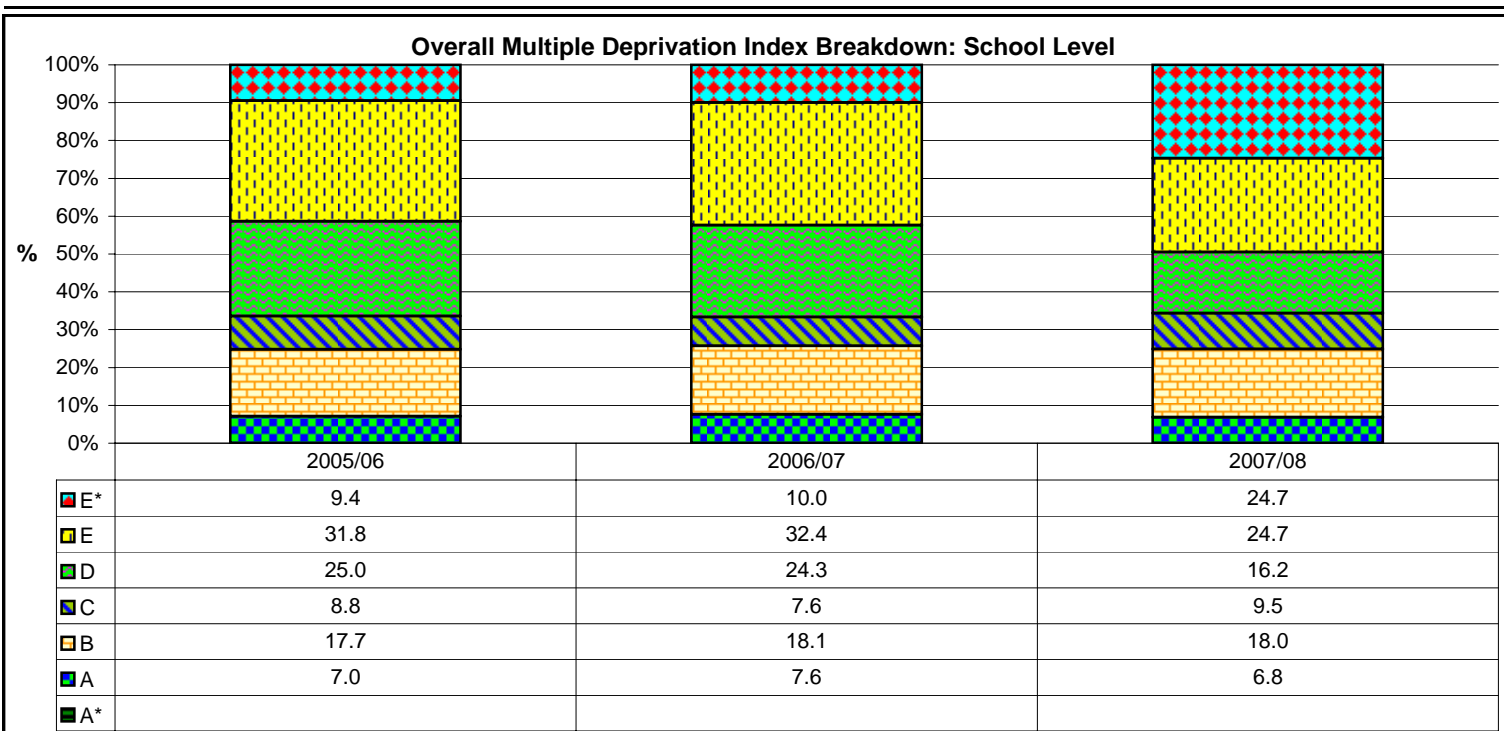
### Key

% Pupils	Percentage of pupils who live in the SOA	Super Output Area (SOA) level interpretations are based on an assessment of each SOA's rank out of 32482 SOAs in England & Wales	
Mult	Overall Multiple deprivation index		
Edu	Education, Skills and training deprivation index	E*	Less than 5% Most deprived
Inc	Income deprivation index	E	Between 5% and 25%
Emp	Employment deprivation index	D	Between 25% and 40%
Health	Health and Disability deprivation index	C	Between 40% and 60%
Hou	Barriers to Housing and Services deprivation index	B	Between 60% and 75%
Crime	Crime and Disorder deprivation index	A	Between 75% and 95%
Liv En	Living Environment deprivation index	A*	Equal to or Greater than 95% Least deprived

**Total number on roll (07/08) 760**

	% Pupil	Mult	Edu	Inc	Emp	Health	Hou <sup>5</sup>	Crime	Liv En
Total Percentage Matched	100.00								
Weighted by NOR by Ward factor for matched pupils		D	D	D	D	E	A	C	D
Percentile ranking by NOR by Ward for matched pupils		69	67	62	74	80	24	56	72
Invalid postcodes	0.00								

SOA	Ward	% Pupil	Mult	Edu	Inc	Emp	Health	Hou <sup>5</sup>	Crime	Liv En
No more SOA's to display										



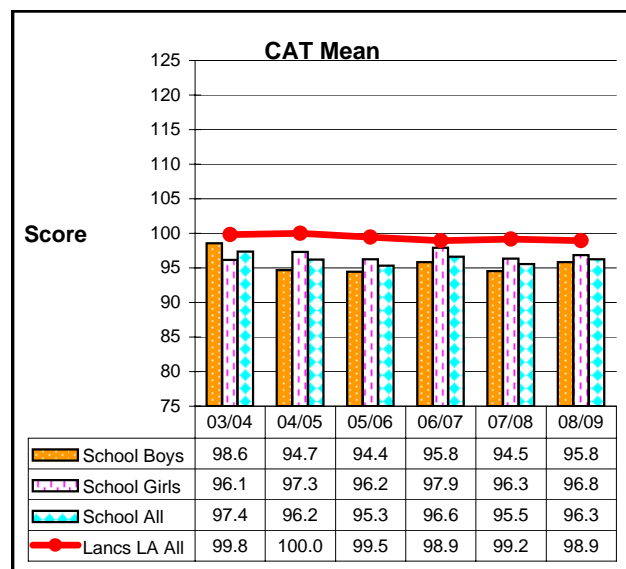
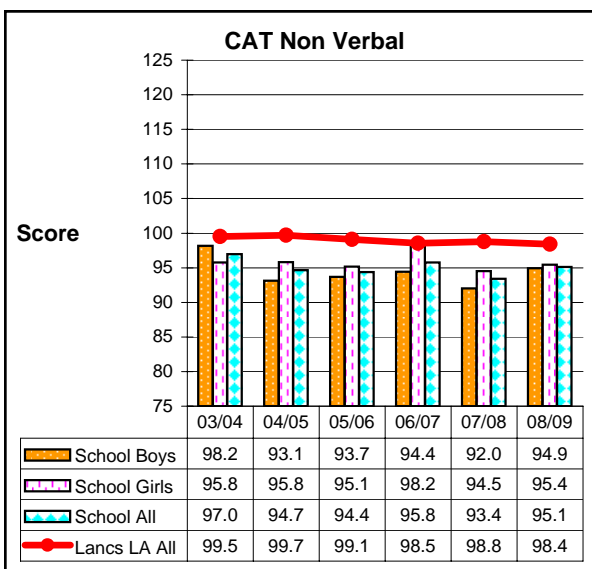
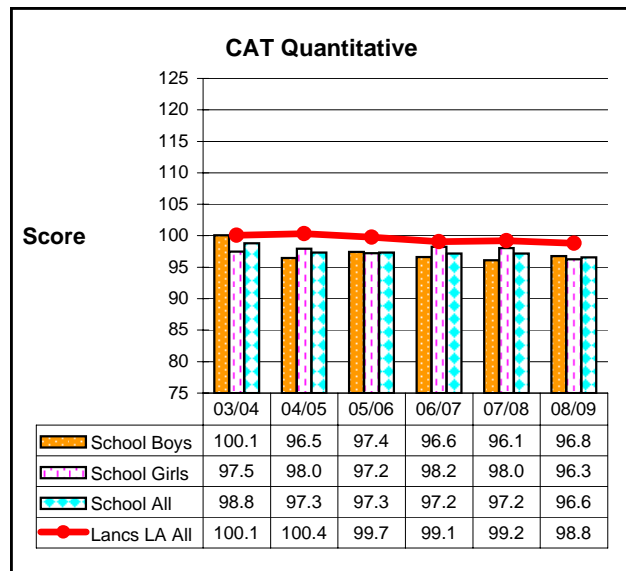
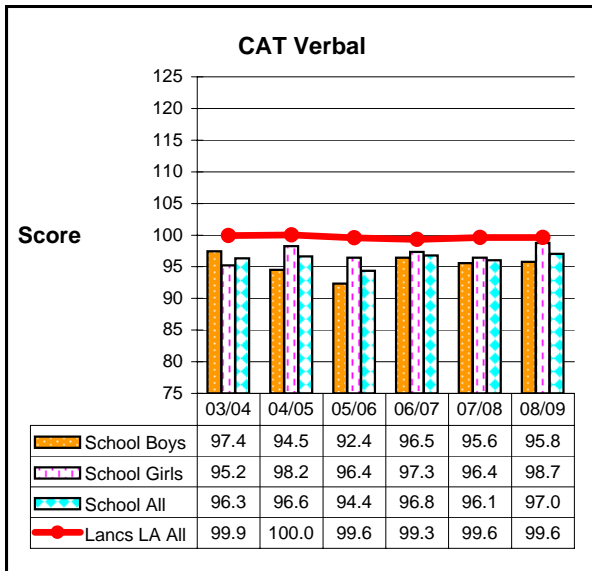
# Prior Attainment: GL assessment Cognitive Abilities Test Edition 3 (CAT3)

(See also Secondary Interpretation and Technical Guidance Notes)

11102 The Hollins Technology College

CAT Test Year	School Census NOR	Year Group in 08/09	No. Matched Verbal Results	Verbal SAS	No. Matched Quantitative Results	Quantitative SAS	No. Matched Non Verbal Results	Non Verbal SAS	Mean No. Matched Results	Mean SAS
03/04	151	12	140	96.3	140	98.8	140	97.0	140	97.4
04/05	151	11	142	96.6	142	97.3	142	94.7	142	96.2
05/06	153	10	150	94.4	150	97.3	150	94.4	150	95.3
06/07	153	9	152	96.8	152	97.2	153	95.8	152	96.6
07/08	149	8	147	96.1	147	97.2	147	93.4	147	95.5
08/09	152	7	150	97.0	150	96.6	150	95.1	150	96.3

- Note:**
- 1) All school level results are based on matching pupils in school on the 2008 Autumn School Census Day (Years 7-11) and the January 2008 School Census Day (Year 12) to the LA CAT database.
  - 2) The 'No. Matched Results' indicates the number of results the PST have been able to match to the LA CATs database and may differ from the NOR for the Year Group in the school.
  - 3) For each year group the highest value in each of the 3 sub tests is highlighted green and the lowest in red.
  - 4) The 2008/09 Lancs LA All Year 7 results are provisional and based on 11364 results from 80 schools.



# Key Stage 2 Results: English

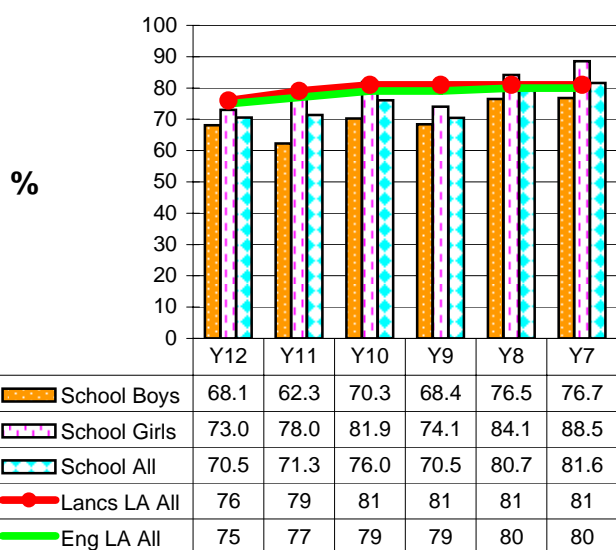
By Gender with School, Lancashire and England Totals

(See also Secondary Interpretation and Technical Guidance Notes)

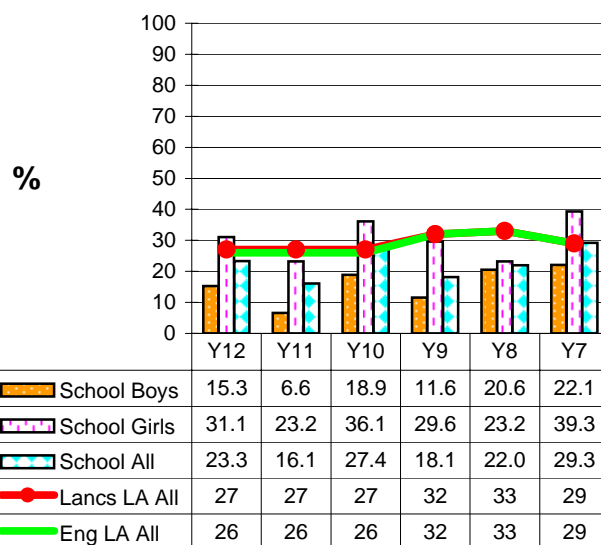
11102 The Hollins Technology College

KS2 Test Year	School Census NOR Jan 2008	Matched Pupils	Year Group in 08/09	%4+	%5	Pts	Ave Pts (En/Ma/Sc)
02/03	151	146	12	70.5	23.3	26.3	26.9
03/04	150	143	11	71.3	16.1	25.9	26.6
04/05	153	146	10	76.0	27.4	26.8	26.9
05/06	153	149	9	70.5	18.1	26.1	26.8
06/07	153	150	8	80.7	22.0	26.9	27.3
07/08		147	7	81.6	29.3	27.4	27.4

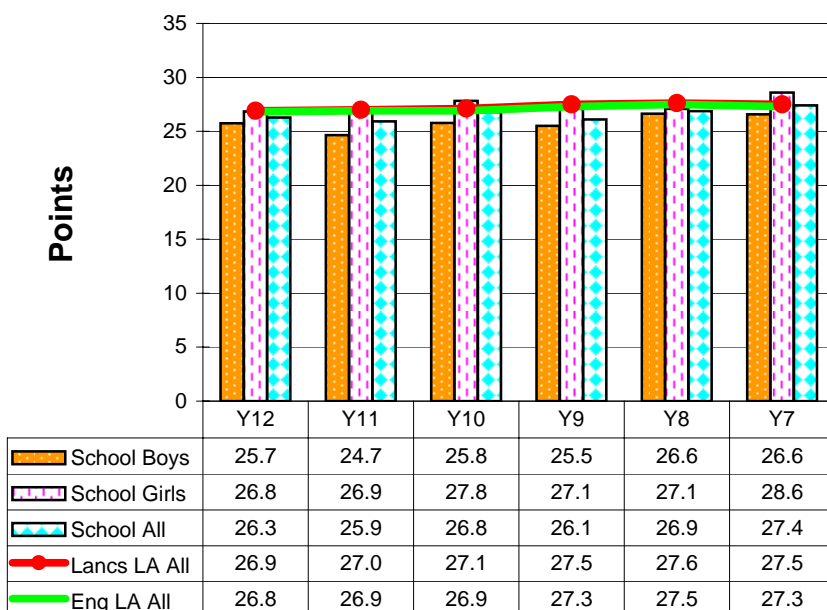
## Key Stage 2 Results: English Level 4+



## Key Stage 2 Results: English Level 5



## Key Stage 2 Results: English Points



Note: 1) 07/08 (Year 7) results are based on unvalidated data (17/10/08) and should be treated with caution.  
2) Blank boxes indicate the data is not available

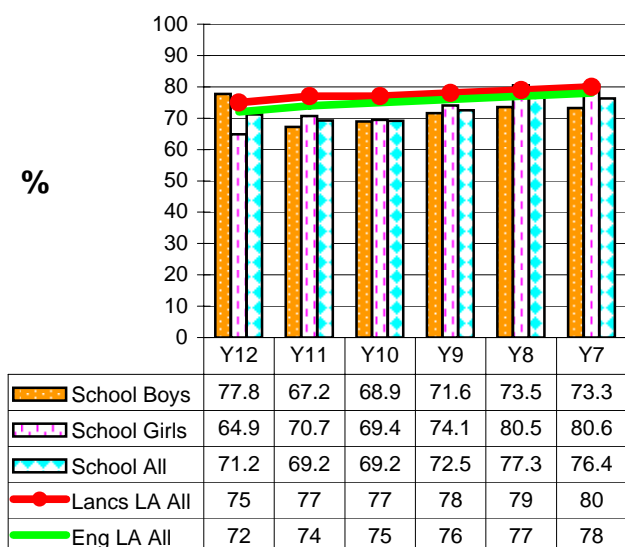
# Key Stage 2 Results: Maths

By Gender with School, Lancashire and England Totals  
(See also Secondary Interpretation and Technical Guidance Notes)

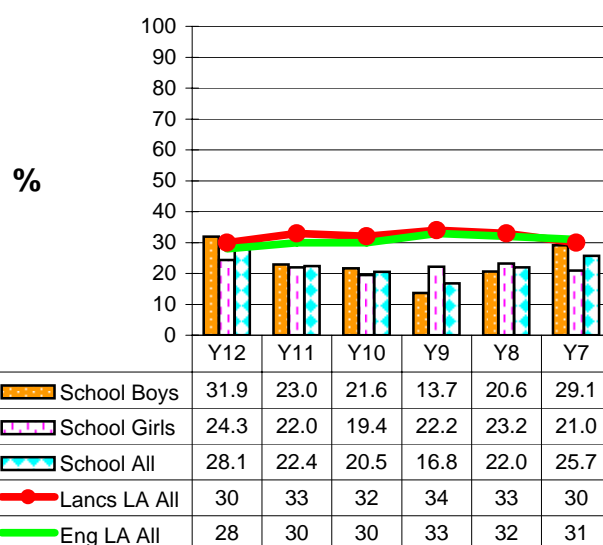
11102 The Hollins Technology College

KS2 Test Year	School Census NOR Jan 2008	Matched Pupils	Year Group in 08/09	%4+	5%	Pts	Ave Pts (En/Ma/Sc)
02/03	151	146	12	71.2	28.1	26.6	26.9
03/04	150	143	11	69.2	22.4	26.2	26.6
04/05	153	146	10	69.2	20.5	25.9	26.9
05/06	153	149	9	72.5	16.8	26.2	26.8
06/07	153	150	8	77.3	22.0	26.6	27.3
07/08		148	7	76.4	25.7	26.9	27.4

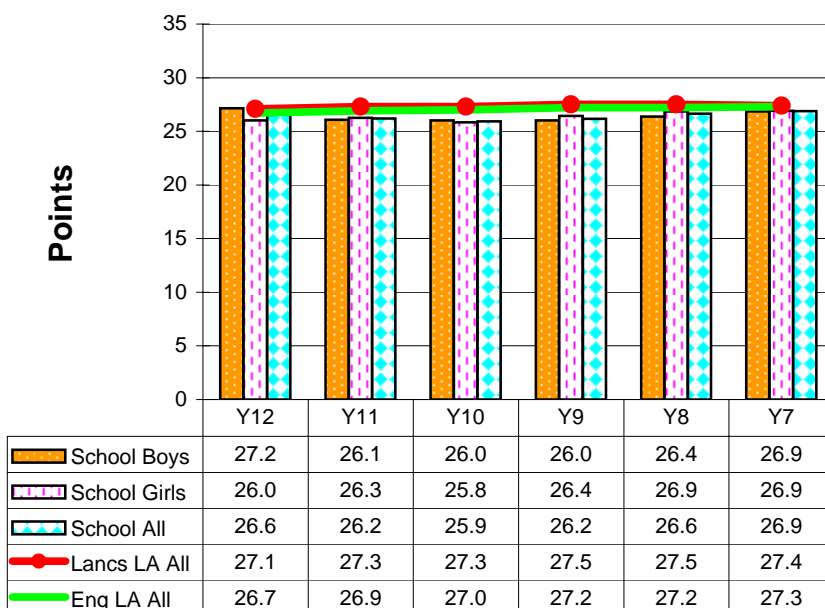
## Key Stage 2 Results: Maths Level 4+



## Key Stage 2 Results: Maths Level 5



## Key Stage 2 Results: Maths Points



Note: 1) 07/08 (Year 7) results are based on unvalidated data (17/10/08) and should be treated with caution.

2) Blank boxes indicate the data is not available

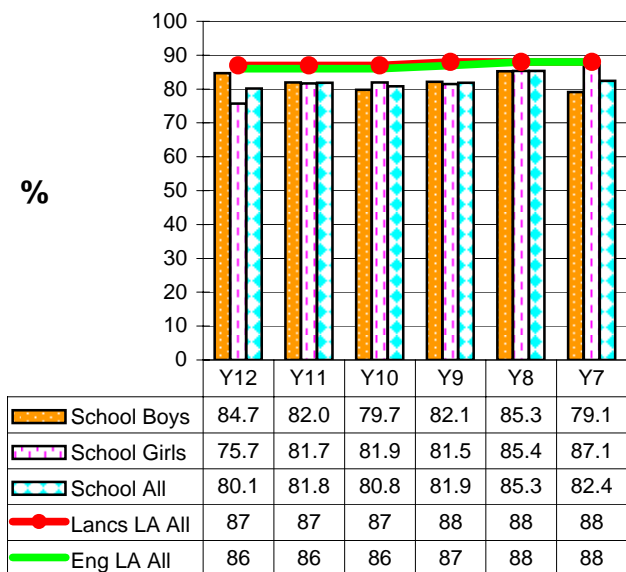
# Key Stage 2 Results: Science

By Gender with School, Lancashire and England Totals  
(See also Secondary Interpretation and Technical Guidance Notes)

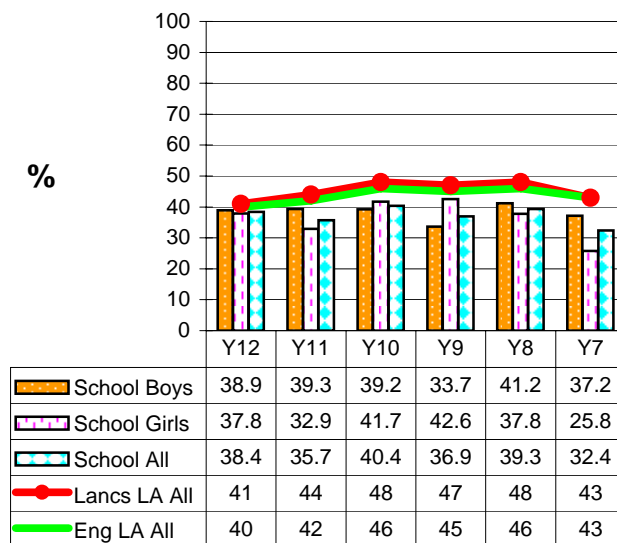
11102 The Hollins Technology College

KS2 Test Year	School Census NOR Jan 2008	Matched Pupils	Year Group in 08/09	%4+	5%	Pts	Ave Pts (En/Ma/Sc)
02/03	151	146	12	80.1	38.4	27.9	26.9
03/04	150	143	11	81.8	35.7	27.9	26.6
04/05	153	146	10	80.8	40.4	28.0	26.9
05/06	153	149	9	81.9	36.9	28.2	26.8
06/07	153	150	8	85.3	39.3	28.4	27.3
07/08		148	7	82.4	32.4	27.9	27.4

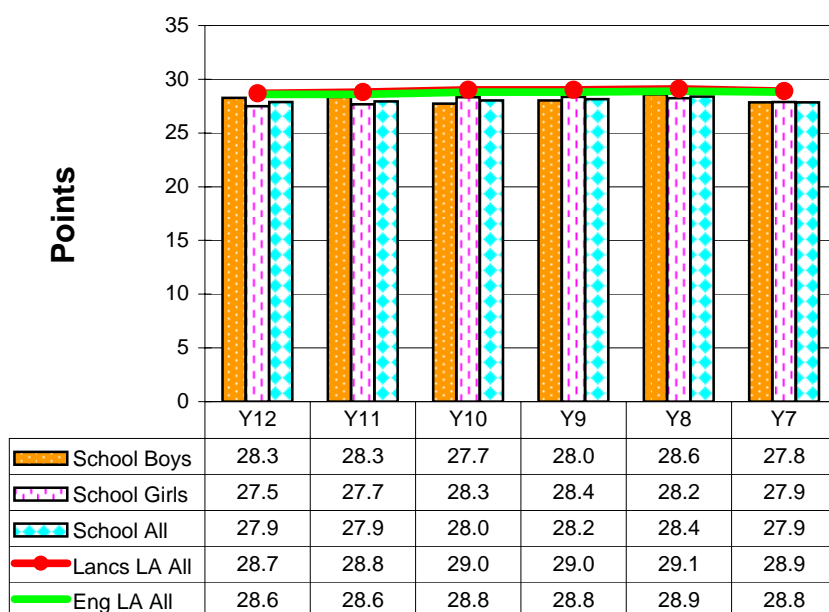
## Key Stage 2 Results: Science Level 4+



## Key Stage 2 Results: Science Level 5



## Key Stage 2 Results: Science Points



**Note:** 1) 07/08 (Year 7) results are based on unvalidated data (17/10/08) and should be treated with caution.  
2) Blank boxes indicate the data is not available

12/22

## Key Stage 2 - Key Stage 3 Conversion Results

(See also Secondary Interpretation and Technical Guidance Notes)

11102 The Hollins Technology College  
English KS2 - KS3 Conversion (2008 KS3 Test data)

		KS3 English Level											%2+ Levels Progress
KS2 Level	Matched NOR	A	B	2	3	4	5	6	7	8	%L5+	%L6+	
A	1	0	1		0	0	0	0	0		0.0	0.0	0.0
N	5	2	3		0	0	0	0	0		0.0	0.0	0.0
B	6	1	3		1	1	0	0	0		0.0	0.0	0.0
2	0	0	0		0	0	0	0	0		0.0	0.0	0.0
3	23	1	2		4	9	7	0	0		30.4	0.0	0.0
4	71	14	1		0	5	34	17	0		71.8	23.9	0.0
5	40	8	0		0	0	6	18	8		80.0	65.0	20.0
<b>Total</b>	<b>149</b>	<b>26</b>	<b>10</b>		<b>5</b>	<b>16</b>	<b>48</b>	<b>36</b>	<b>8</b>		<b>61.7</b>	<b>29.5</b>	<b>5.4</b>
Lancs	13165	499	344		453	1761	4961	3265	1131		71.1	33.4	8.6

Maths KS2 - KS3 Conversion (2008 KS3 Test data)

		KS3 Maths Level											%2+ Levels Progress
KS2 Level	Matched NOR	A	B	2	3	4	5	6	7	8	%L5+	%L6+	
A	1	0	0	0	0	0	0	0	1	0	100.0	100.0	100.0
N	4	0	0	1	2	0	0	0	0	0	0.0	0.0	0.0
B	5	0	0	0	4	0	0	0	0	0	0.0	0.0	0.0
2	3	0	0	0	2	0	0	0	0	0	0.0	0.0	0.0
3	32	1	0	0	2	10	16	3	0	0	59.4	9.4	0.0
4	71	1	0	0	0	1	14	35	20	0	97.2	77.5	28.2
5	30	0	0	0	0	0	0	2	21	7	100.0	100.0	93.3
<b>Total</b>	<b>149</b>	<b>2</b>	<b>0</b>	<b>1</b>	<b>10</b>	<b>12</b>	<b>30</b>	<b>42</b>	<b>42</b>	<b>7</b>	<b>81.2</b>	<b>61.1</b>	<b>32.9</b>
Lancs	13165	315	112	50	661	1526	2454	3510	2996	1026	75.9	57.2	30.6

Science KS2 - KS3 Conversion (2008 KS3 Test data)

		KS3 Science Level											%2+ Levels Progress
KS2 Level	Matched NOR	A	B	2	3	4	5	6	7	8	%L5+	%L6+	
A	0	0	0	0	0	0	0	0	0		0.0	0.0	0.0
N	1	0	0	0	0	0	0	0	0		0.0	0.0	0.0
B	4	0	0	0	4	0	0	0	0		0.0	0.0	0.0
2	1	0	0	0	1	0	0	0	0		0.0	0.0	0.0
3	22	1	0	0	4	15	2	0	0		9.1	0.0	0.0
4	59	1	0	0	1	18	26	13	0		66.1	22.0	0.0
5	59	1	0	0	0	2	12	37	7		94.9	74.6	11.9
<b>Total</b>	<b>149</b>	<b>4</b>	<b>0</b>	<b>0</b>	<b>10</b>	<b>35</b>	<b>41</b>	<b>51</b>	<b>7</b>		<b>66.4</b>	<b>38.9</b>	<b>4.7</b>
Lancs	13165	500	94	43	542	2197	3808	3638	1905		71.0	42.1	14.5

- Note:**
- 1) 07/08 KS3 results are based on unvalidated data (17/10/08) and should be treated with caution.
  - 2) The figures highlighted in red indicate pupils who failed to progress or regressed below their KS2 levels.
  - 3) The figures highlighted in green indicate pupils who have progressed at least 2 levels above their KS2 levels.
  - 4) If Matched NOR is different to sum of 'KS3 Level' this is due to pupils having attained other levels (e.g. F, L, T).
  - 5) The LA is only able to match results for pupils who sat their KS2 tests in a Lancashire maintained school and as a result these results may differ from whole school results (LSIP pages 10, 11 & 12).
  - 6) Total '%2+Levels Progress' is the total pupils making 2L+ progress (seen in green italics) divided by the total 'Matched NOR' of KS2 Levels B, 2, 3, 4 and 5, and may differ from those quoted on Page 14.

## Key Stage 3 Results: School Level

(See also *Secondary Interpretation and Technical Guidance Notes*)

11102 The Hollins Technology College

### Key Stage 3 Targets and Results (Statutory)

Year	Number of Eligible Pupils	English				Mathematics				English & Maths		Science	
		% 2+Levels KS2/3		%5+		% 2+Levels KS2/3		%5+		%5+		%5+	
		Target	Result	Target	Result	Target	Result	Target	Result	Target	Result	Target	Result
03/04	150		12.1	64.1	† 71		69.5	76.0	† 78		67.3	68.0	† 63
04/05	156		21.3	66.4	† 72		72.7	64.1	† 81		69.9	62.1	† 62
05/06	151		31.0	70.0	† 74		80.7	77.0	† 83		71.5	67.0	† 69
06/07	149		42.5	74.0	† 84		75.0	79.0	† 78		75.8	67.0	† 69
07/08	153		27.7	74.0	60.8		71.3	83.0	79.7		58.8	70.0	65.4
08/09	152	38.0				75.0				77.0		72.0	

### Key Stage 3 Non-Statutory Results

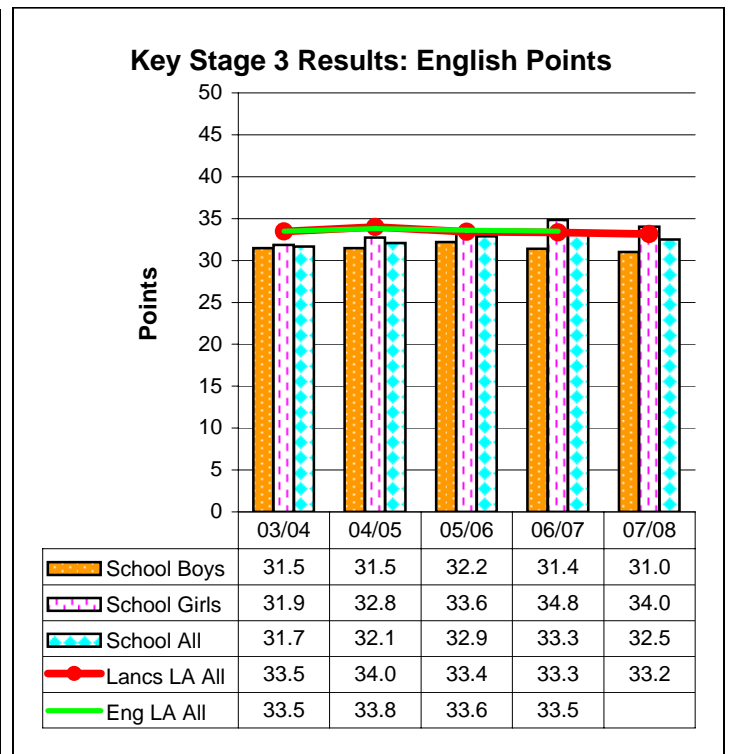
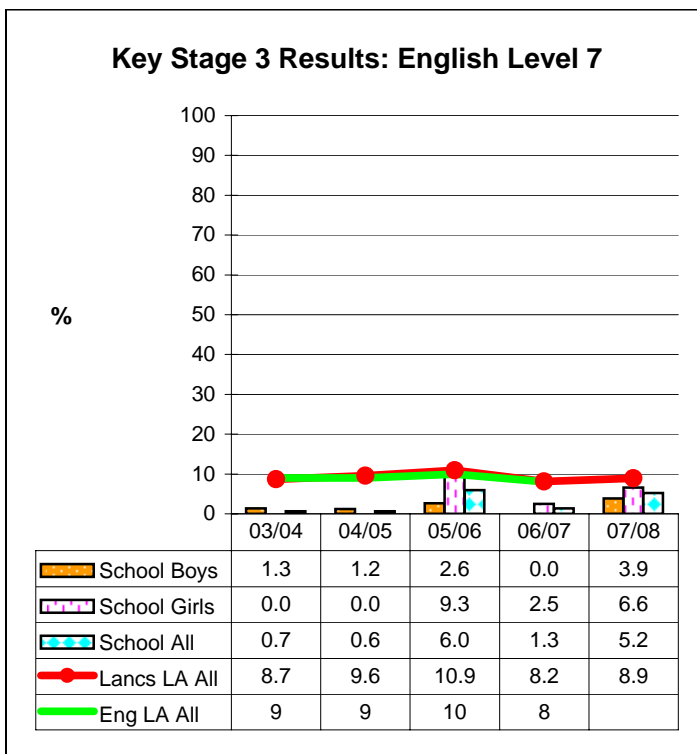
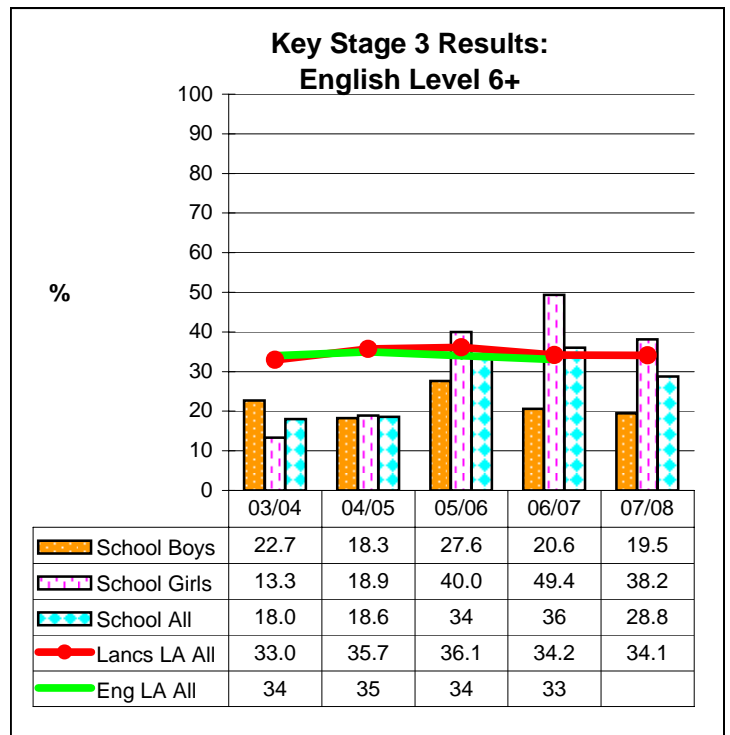
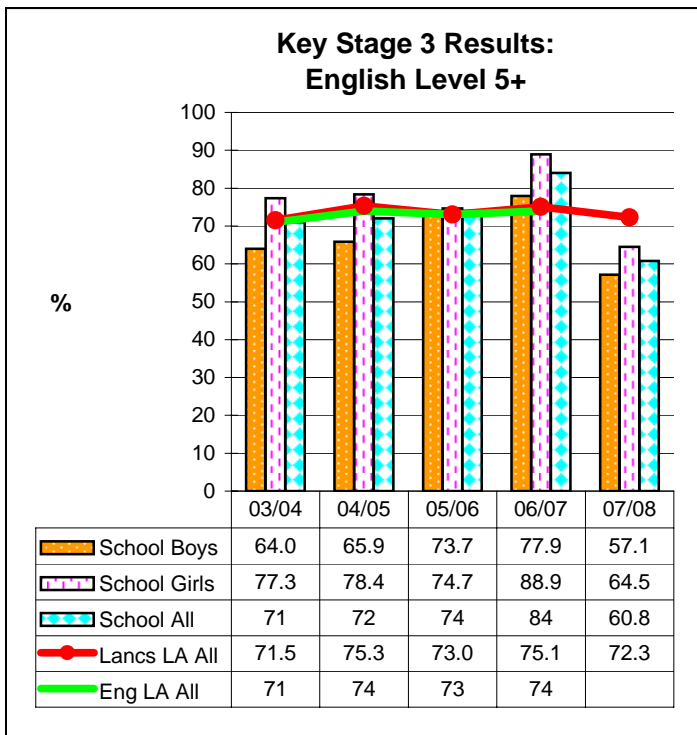
Year	Number of Eligible Pupils	English			Mathematics				Science			Ave Pts (EMS)	KS2-KS3 CVA
		Results			Results				Results				
		% 6+	%7	Pts	% 6+	%7+	%8	Pts	% 6+	%7	Pts		
03/04	150	18.0	0.7	31.7	56.0	22.0	1.3	35.9	30.7	6.0	32.2	† 33.3	
04/05	156	18.6	0.6	32.1	59.0	28.8	1.9	37.2	26.9	1.9	32.2	† 33.8	
05/06	151	† 34	6.0	32.9	† 66	38.4	7.9	38.8	† 36	10.6	33.4	† 35.2	† 100.7
06/07	149	† 36	1.3	33.3	† 63	24.8	6.7	37.2	† 42	6.7	34.0	† 35.0	† 101.8
07/08	153	28.8	5.2	32.5	60.1	32.0	4.6	37.1	38.6	4.6	33.2	34.4	

- Note:**
- 1) 07/08 figures are based on unvalidated data (17/10/08) and should be treated with caution.
  - 2) Information highlighted with † is taken from published Achievement & Attainment tables.
  - 3) Blank or shaded boxes indicate the data is not available or relevant.

# Key Stage 3 Results: English

## By Gender with School, Lancashire and England Totals

11102 The Hollins Technology College

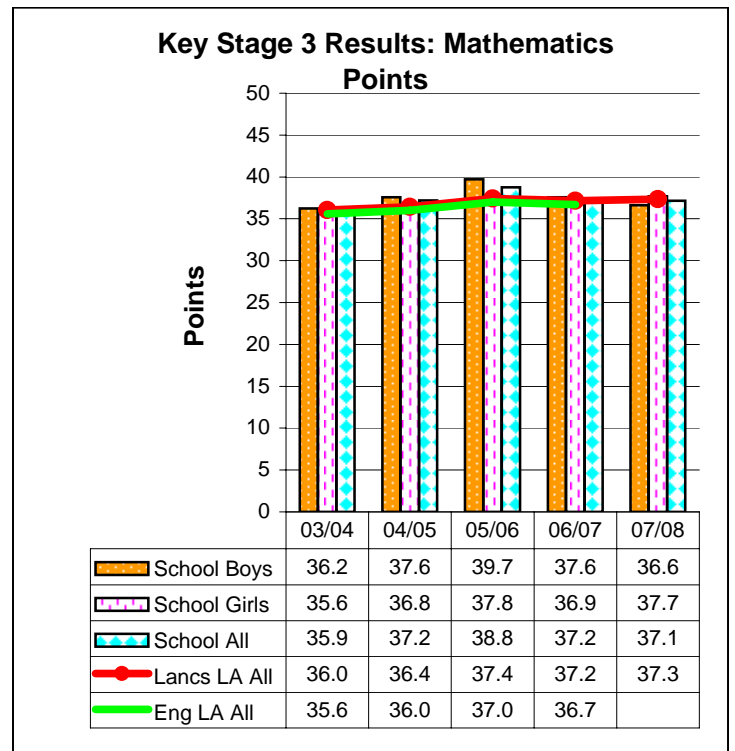
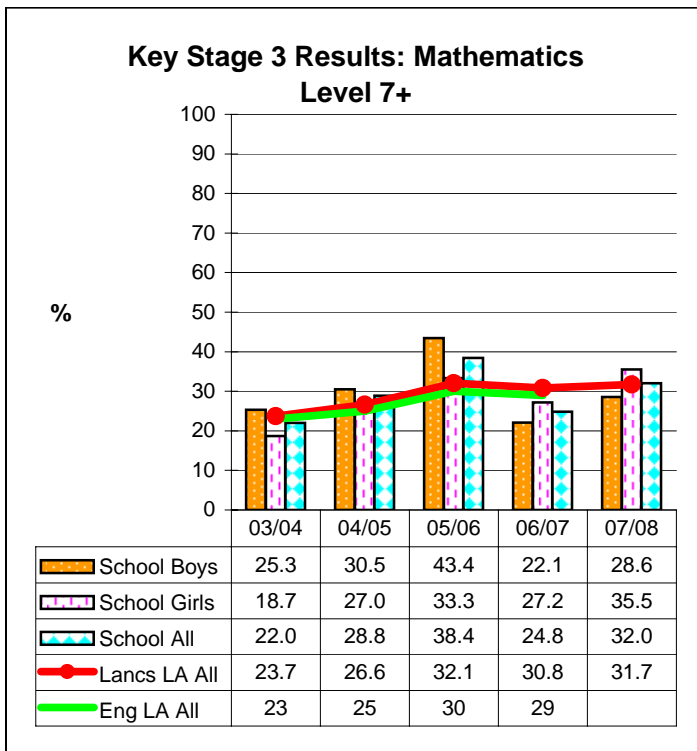
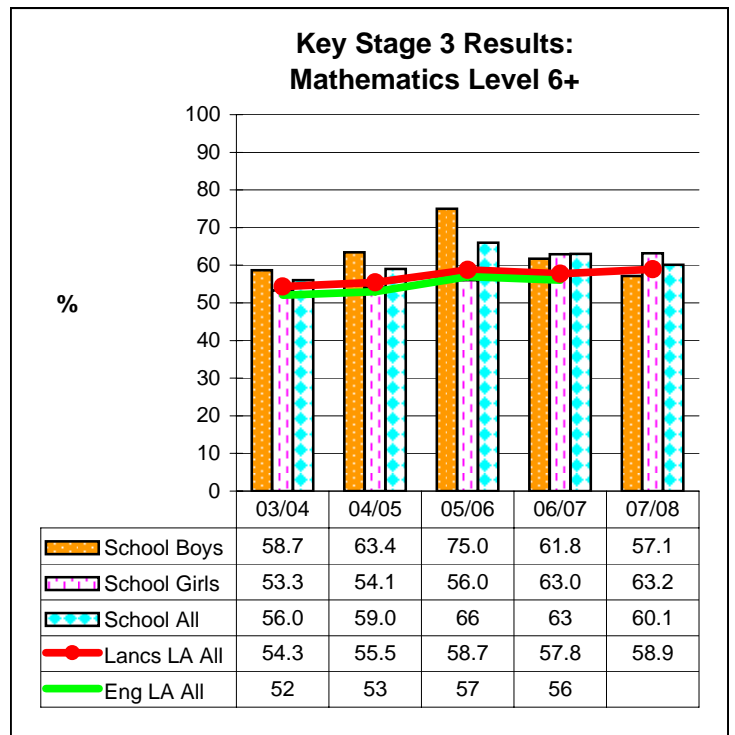
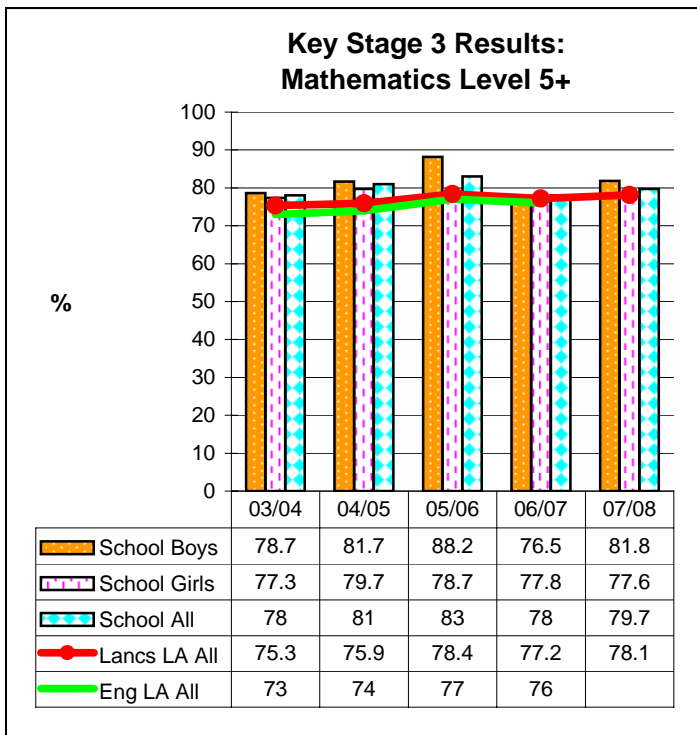


- Note:** 1) School level information is from published Achievement and Attainment tables where available. This information is indicated with a † against the results on Page 14. All other information including the breakdown by gender is LA calculated.
- 2) Lancashire level information is all LA calculated.
- 3) 07/08 results are based on unvalidated data (17/10/08) and should be treated with caution.
- 4) Blank boxes indicate the data is not available.

# Key Stage 3 Results: Mathematics

## By Gender with School, Lancashire and England Totals

11102 The Hollins Technology College

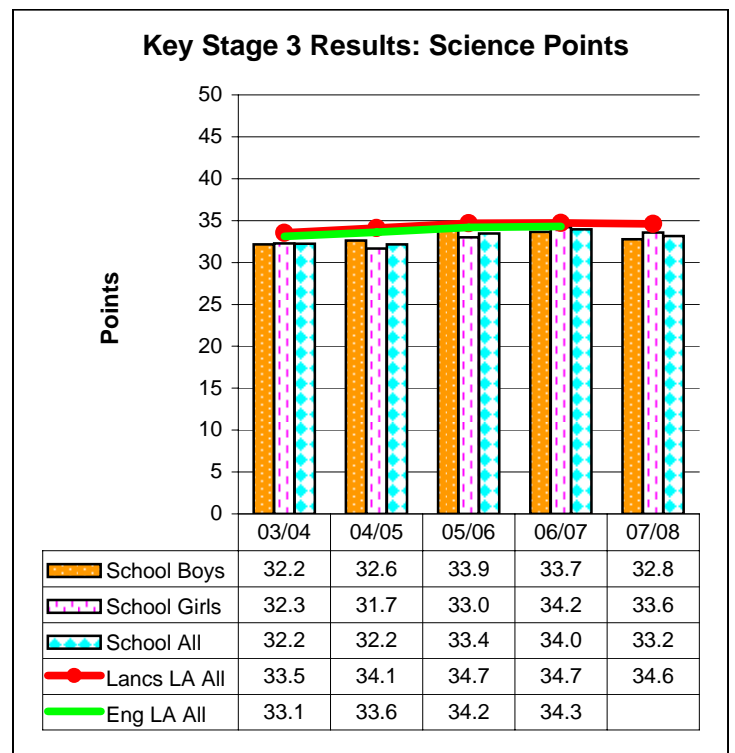
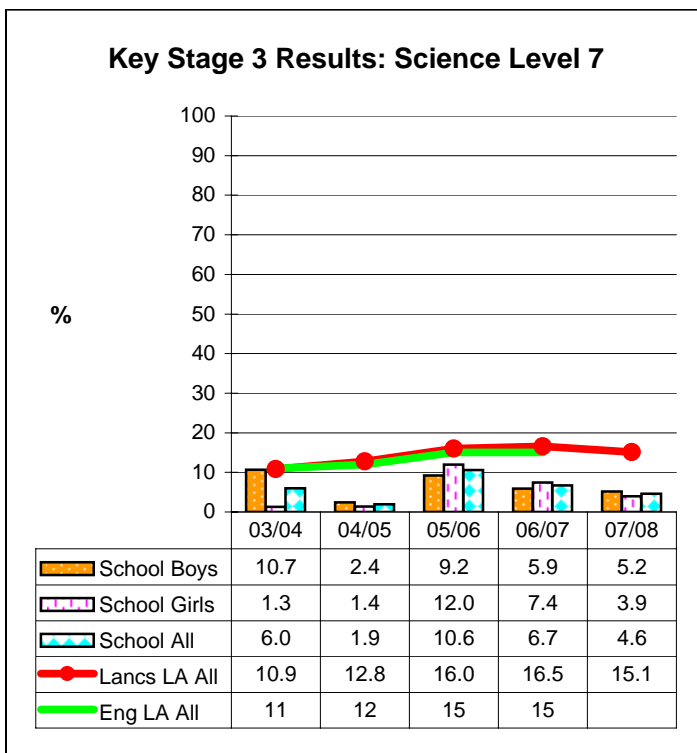
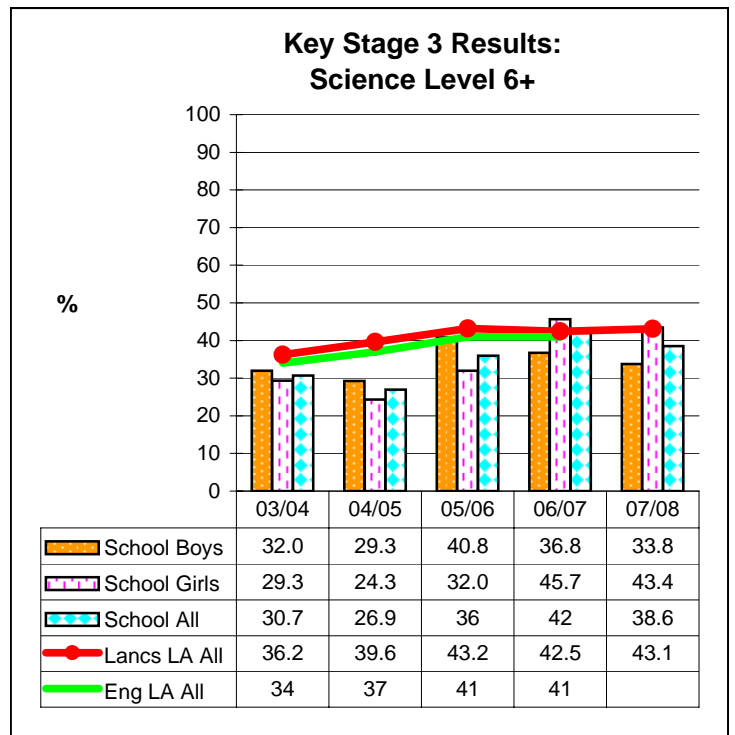
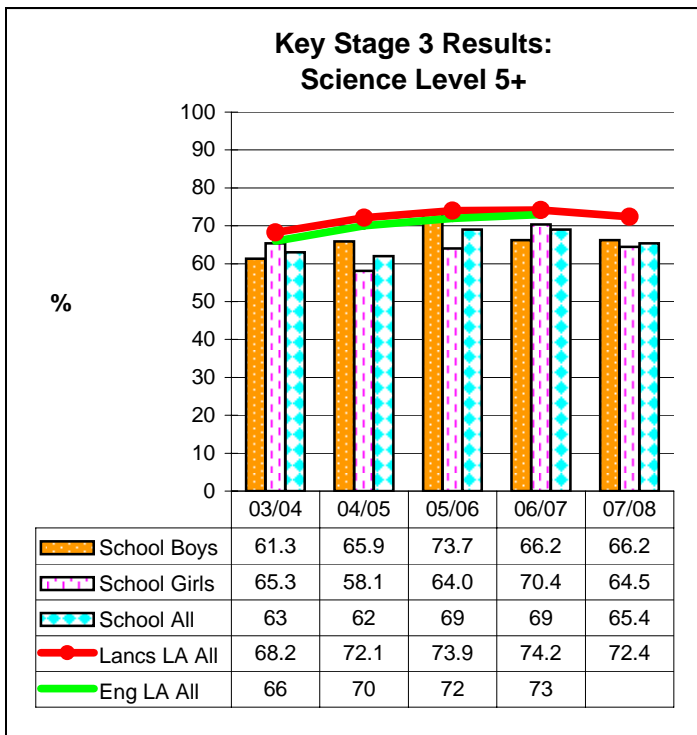


**Note:** 1) School level information is from published Achievement and Attainment tables where available. This information is indicated with a † against the results on Page 14. All other information including the breakdown by gender is LA calculated.  
 2) Lancashire level information is all LA calculated.  
 3) 07/08 results are based on unvalidated data (17/10/08) and should be treated with caution.  
 4) Blank boxes indicate the data is not available.

# Key Stage 3 Results: Science

By Gender with School, Lancashire and England Totals

11102 The Hollins Technology College



**Note:** 1) School level information is from published Achievement and Attainment tables where available. This information is indicated with a † against the results on Page 14. All other information including the breakdown by gender is LA calculated.  
 2) Lancashire level information is all LA calculated.  
 3) 07/08 results are based on unvalidated data (17/10/08) and should be treated with caution.  
 4) Blank boxes indicate the data is not available.

## Key Stage 3 - Key Stage 4 Conversion Results

(See also Secondary Interpretation and Technical Guidance Notes)

11102 The Hollins Technology College

### School Level Results

KS4 Results								
KS3 Average Points	Matched NOR	% 3A*-A	% 5A*-C	% 5A*-C inc. Eng & Maths	% 5A*-G	% 5A*-G inc. Eng & Maths	% 1A*-G	Avg Points Per Pupil
No APS	1	0.0	0.0	0.0	100.0	100.0	100.0	236.0
<21 (B)	5	0.0	0.0	0.0	60.0	60.0	80.0	98.8
21-26 (L3)	10	0.0	0.0	0.0	80.0	80.0	100.0	212.3
27-32 (L4)	26	7.7	19.2	0.0	92.3	88.5	100.0	297.4
33-38 (L5)	53	13.2	83.0	69.8	96.2	96.2	98.1	420.9
39-44 (L6)	42	47.6	95.2	95.2	97.6	95.2	100.0	487.2
45-50 (L7)	12	100.0	100.0	100.0	100.0	100.0	100.0	597.3
51+ (L8)	0	0.0	0.0	0.0	0.0	0.0	0.0	0.0
<b>Total</b>	<b>149</b>	<b>27.5</b>	<b>67.8</b>	<b style="color: green;">59.7</b>	<b>94.0</b>	<b>92.6</b>	<b>98.7</b>	<b>406.2</b>

### Lancashire Results

KS4 Results								
KS3 Average Points	Matched NOR	% 3A*-A	% 5A*-C	% 5A*-C inc. Eng & Maths	% 5A*-G	% 5A*-G inc. Eng & Maths	% 1A*-G	Avg Points Per Pupil
No APS	194	6.7	26.8	15.5	55.2	53.1	85.1	212.3
<21 (B)	341	0.9	3.2	0.6	40.5	32.0	70.1	114.6
21-26 (L3)	989	0.1	6.0	0.0	74.5	65.4	95.0	192.0
27-32 (L4)	2538	2.4	24.7	3.3	90.7	88.3	98.9	288.8
33-38 (L5)	4586	8.3	70.7	45.3	97.8	96.8	99.8	395.7
39-44 (L6)	3926	44.1	96.8	90.7	99.1	99.0	99.9	483.9
45-50 (L7)	1423	93.2	99.6	99.2	99.7	99.4	99.9	570.1
51+ (L8)	0	0.0	0.0	0.0	0.0	0.0	0.0	0.0
<b>Total</b>	<b>13997</b>	<b>25.1</b>	<b>65.8</b>	<b>51.2</b>	<b>93.5</b>	<b>91.7</b>	<b>98.4</b>	<b>395.0</b>

Note: 1) 07/08 KS4 results are based on revised data (24/11/08)

2) Figures highlighted in red and green indicate where the results for the centre differ from the Lancashire results by 10% or more for percentages and for differences of 30 or more for average points per pupil.

3) The figures above are based on pupils with valid matched KS3 and KS4 data and therefore can not be compared to centre results for 5A\*-C (for example) as it is likely they will differ.

4) KS3 level 'No APS' shows the percentage of Pupils with no Average Point Score.

## Key Stage 3 - Key Stage 4 Conversion Results

(See also Secondary Interpretation and Technical Guidance Notes)

11102 The Hollins Technology College

### English

KS3 Level	Total Matched	No KS4 Level	KS4 Level									%2+ Levels Progress	
			U	G	F	E	D	C	B	A	A*		
A	1	0	0	0	0	0	0	0	1	0	0	0	
B	10	0	2	0	1	4	1	2	0	0	0	0	
3	2	0	0	0	0	<i>1</i>	<i>1</i>	0	0	0	0	0	100.0
4	22	1	0	0	0	4	<i>13</i>	<i>4</i>	0	0	0	0	77.3
5	59	0	<i>2</i>	0	0	<i>3</i>	6	<i>37</i>	<i>11</i>	0	0	0	81.4
6	42	1	0	0	0	<i>1</i>	0	9	<i>23</i>	<i>8</i>	0	0	73.8
7	9	0	0	0	0	0	0	<i>1</i>	3	<i>2</i>	<i>3</i>	0	55.6
<b>Total</b>	<b>147</b>	<b>2</b>	<b>4</b>	<b>0</b>	<b>1</b>	<b>13</b>	<b>23</b>	<b>54</b>	<b>37</b>	<b>10</b>	<b>3</b>		
Lancs	13905	501	155	178	492	1241	2455	3990	2969	1468	456		

### Mathematics

KS3 Level	Total Matched	No KS4 Level	KS4 Level									%2+ Levels Progress	
			U	G	F	E	D	C	B	A	A*		
A	2	0	0	0	0	1	0	0	0	0	1	0	
B	0	0	0	0	0	0	0	0	0	0	0	0	
3	5	0	<i>1</i>	<i>4</i>	0	0	0	0	0	0	0	0	0.0
4	17	0	0	<i>2</i>	<i>2</i>	11	<i>2</i>	0	0	0	0	0	11.8
5	26	2	0	<i>1</i>	<i>1</i>	<i>3</i>	12	<i>7</i>	0	0	0	0	26.9
6	39	0	0	<i>1</i>	<i>1</i>	<i>1</i>	<i>2</i>	24	<i>10</i>	0	0	0	25.6
7	46	0	0	0	0	0	0	<i>3</i>	16	<i>24</i>	<i>3</i>	0	58.7
8	12	0	0	0	0	0	0	0	0	3	<i>9</i>	0	75.0
<b>Total</b>	<b>147</b>	<b>2</b>	<b>1</b>	<b>8</b>	<b>4</b>	<b>16</b>	<b>16</b>	<b>34</b>	<b>26</b>	<b>28</b>	<b>12</b>		
Lancs	13867	346	238	476	979	1604	2220	3333	2538	1523	640		

- Note:**
- 1) 07/08 KS4 results are based on revised data (24/11/08)
  - 2) The figures above are based on pupils with valid matched KS3 and KS4 data and therefore can not be compared to centre results for 5A\*-C (for example) as it is likely they will differ.
  - 3) The KS3 results include pupils achieving levels A, B, 3, 4, 5, 6, 7 and 8. Pupils with a level of D, E, N, Q, T or W are not shown but will be included in the Total, all other levels are ignored.
  - 4) 'No KS4 Level' shows the number of pupils that sat KS4 exams and had a linked KS3 result but did not achieve any KS4 result in that subject (English or Maths respectively).
  - 5) 'Total Matched' is the number of matched pupils (with valid KS4 and linked KS3 results).
  - 6) '%2+ Levels Progress' is number of pupils making progress (seen in green italics) divided by the 'Total Matched', for each KS3 level where available.
  - 7) Figures highlighted in green italics indicate pupils who have progressed at least two Levels above their KS3 results. Red indicates pupils who failed to progress, or regressed below their KS3 levels.

## Key Stage 4 Results: School Level

(See also Secondary Interpretation and Technical Guidance Notes)

11102 The Hollins Technology College

### Percentage of 15 year old pupils (Statutory)

Year	School Census NOR	2+Levels KS3/4				5+ A*-C (Level 2)		5+ A*- C Inc English & Maths		Average Points Per Pupil Results		
		English		Maths		Target	Result	Target	Result	Target	Old	New
		Target	Result	Target	Result							
03/04	161		55.8		56.9	53.2	† 43		39.1	43.6	38.6	317.4

### Percentage of pupils at the end of Key Stage 4 (Statutory)

Year	School Census NOR	2+Levels KS3/4				5+ A*-C (Level 2)		5+ A*- C Inc English & Maths		Average Points Per Pupil Results		
		English		Maths		Target	Result	Target	Result	Target	Old	New
		Target	Result	Target	Result							
04/05	147		71.6		54.8	50.0	† 56		50.7	36.0	42.8	† 341.9
05/06	152		87.0		51.9	46.0	† 54		† 53	275.0	42.6	† 325.8
06/07	151		69.2		53.3	50.0	† 61		† 52	310.0	34.4	† 355.6
07/08	151		78.5		38.5	58.0	67.5	55.0	59.6	358.0	46.1	408.8
08/09	150	63.0		55.0				55.0				
09/10	153							50.0				

### Non Statutory Results

Year	School Census NOR	3+ A*-A	5+ A*-G Inc English & Maths	Capped Average Points Per Pupil	5+ A*-G (Level 1)	1+ A*-G	KS2- KS4 CVA	KS3- KS4 CVA
03/04	161	12.4	89.4	279.8	† 91	† 98		
04/05	147	16.2	90.5	292.7	† 93	† 97		
05/06	152	13.2	86.1	289.6	† 88	† 94	† 998.0	
06/07	151	13.9	91.4	293.0	† 93	† 98	† 1,017.1	† 1,004.6
07/08	151	27.2	92.1	318.3	93.4	98.0		

Note: 1) All 07/08 figures are unvalidated. School and Lancs LA calculated are based on revised data (24/11/08).

2) The target for 2009/10 is an estimate based on Lancs Averages. Governors must agree and submit School Targets by 31/12/08.

3) Information highlighted with † is from published Achievement & Attainment tables. All other information is LA calculated.

4) The NOR figures are from the January School Census.

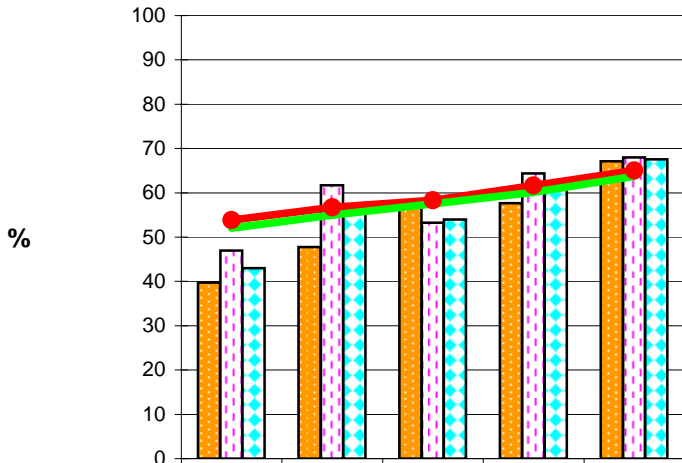
5) Blank or shaded boxes indicate the data is not available or relevant.

# Key Stage 4 Results: Statutory

By Gender with School, Lancashire and England Totals

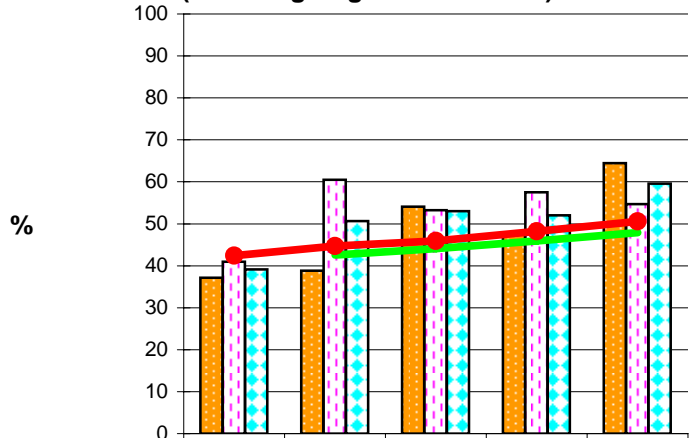
11102 The Hollins Technology College

**GCSE/GNVQ Results: Percentage 5+ A\*-C**



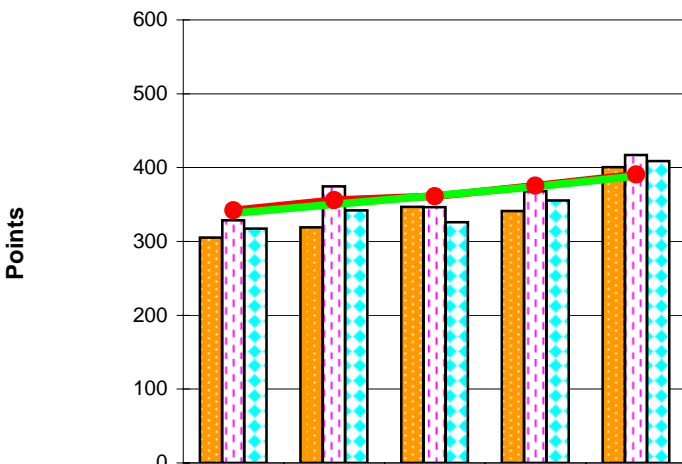
School Boys	39.7	47.8	56.8	57.7	67.1
School Girls	47.0	61.7	53.2	64.4	68.0
All Pupils	43	56	54	61	67.5
Lancs LA All	53.8	56.7	58.3	61.6	65.0
England All	52.0	55.0	57.5	60.1	63.7

**GCSE/GNVQ Results: Percentage 5+ A\*-C (Including English and Maths)**



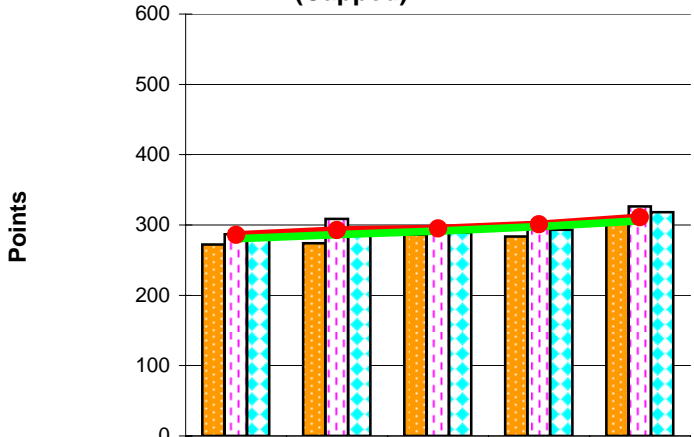
School Boys	37.2	38.8	54.1	47.4	64.5
School Girls	41.0	60.5	53.2	57.5	54.7
All Pupils	39.1	50.7	53	52	59.6
Lancs LA All	42.4	44.7	45.9	48.2	50.6
England All		42.6	44.1	45.9	47.9

**GCSE/GNVQ Results: Average Points**



School Boys	305.3	319.0	346.8	341.1	400.5
School Girls	328.7	374.5	346.3	368.2	417.2
All Pupils	317.4	341.9	325.8	355.6	408.8
Lancs LA All	342.1	355.8	361.2	375.4	390.8
England All	338.0	350.4	361.9	374.3	388.5

**GCSE/GNVQ Results: Average Points (Capped)**



School Boys	272.4	273.9	286.3	283.8	310.3
School Girls	286.7	308.6	292.9	302.7	326.5
All Pupils	279.8	292.7	289.6	293.0	318.3
Lancs LA All	286.0	292.6	294.8	301.0	310.7
England All	280.2	286.5	291.5	297.5	306.0

**Note:**

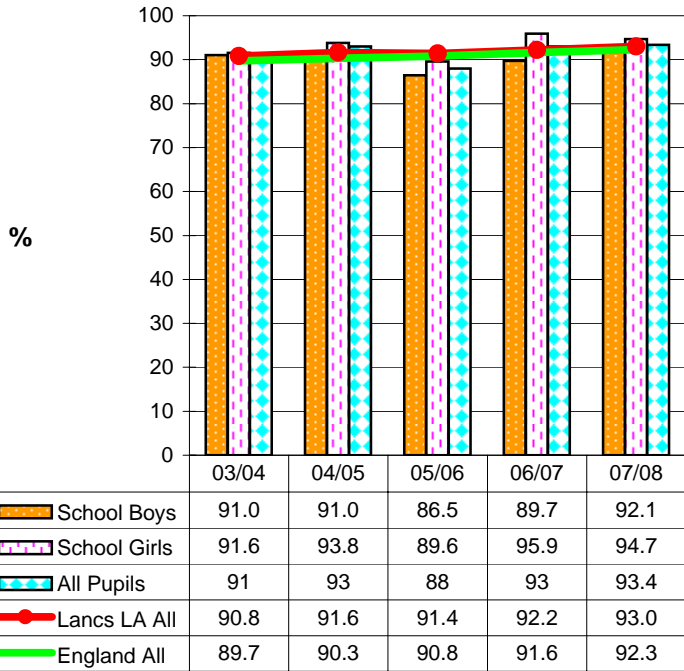
- 1) School level information is from published Achievement and Attainment tables where available. This information is indicated with a † against the results on Page 20. All other information including the breakdown by gender is LA calculated.
- 2) Lancashire and England level information is from the DCSF New Releases 'GCSE and Equivalent Examination Results in England' except for 3A\*-A which is LA calculated.
- 3) All 07/08 figures are unvalidated. School and Lancs LA calculated are based on revised data (24/11/08).
- 4) Blank boxes indicate the data is not available.

# Key Stage 4 Results: Non Statutory

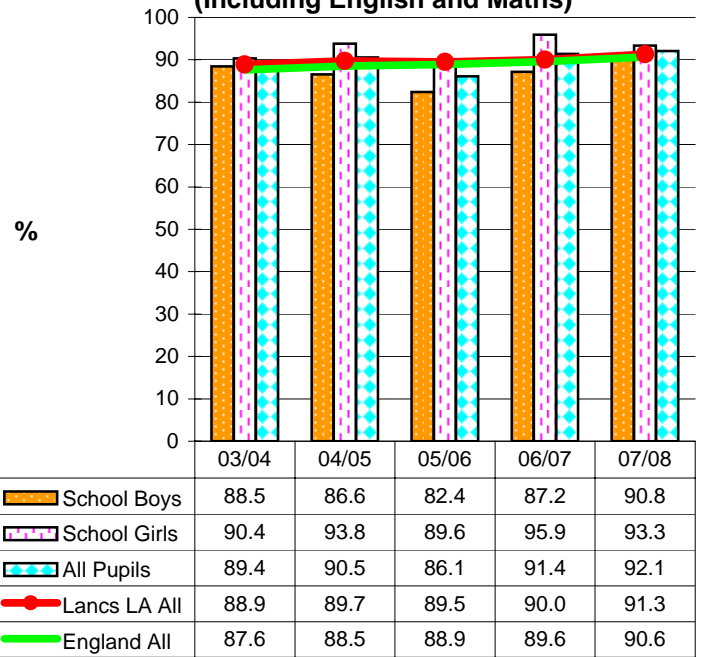
By Gender with School, Lancashire and England Totals

11102 The Hollins Technology College

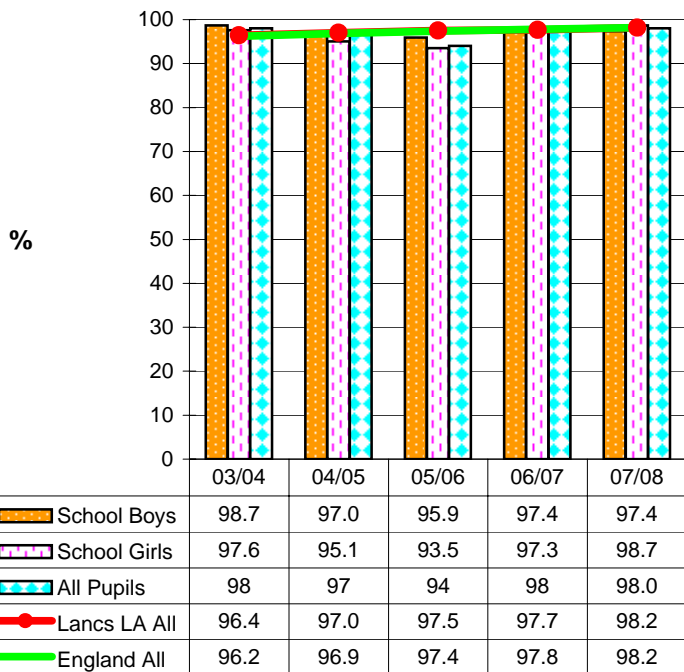
**GCSE/GNVQ Results: Percentage 5+ A\*-G**



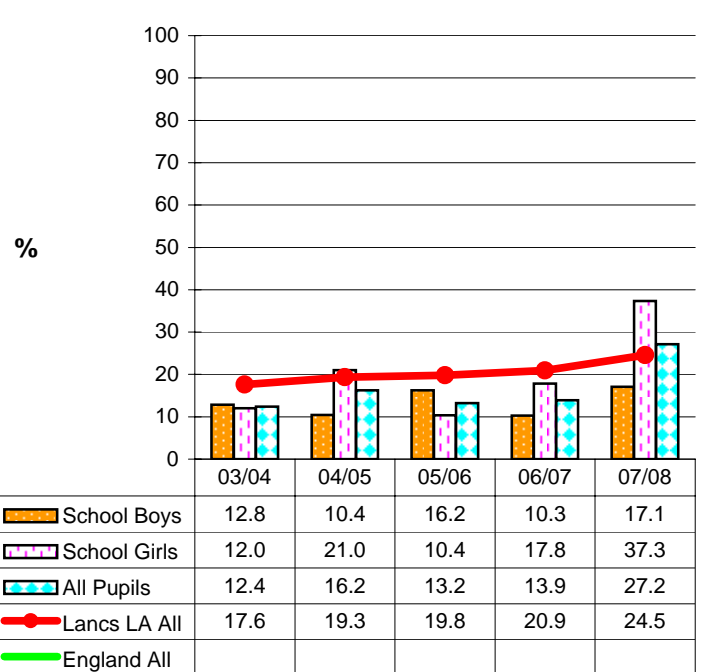
**GCSE/GNVQ Results: Percentage 5+ A\*-G (Including English and Maths)**



**GCSE/GNVQ Results: Percentage 1+ A\*-G**



**GCSE/GNVQ Results: Percentage 3+ A\*- A**



**Note:**

1) All School level information is from published Achievement and Attainment tables where available. This information is indicated with a † against the results on Page 20. All other information including the breakdown by gender is LA calculated.

2) Lancashire and England level information is from the DCSF New Releases 'GCSE and Equivalent Examination Results in England' except for 3A\*-A which is LA calculated.

3) All 07/08 figures are unvalidated. School and Lancs LA calculated are based on revised data (24/11/08).

4) Blank boxes indicate the data is not available.