

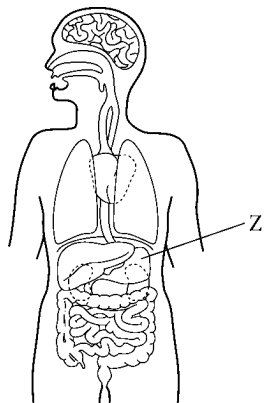
Year 9 Cells Quick Quiz

Put a circle around the correct answer.

- 1 An organ is:
- A another name for a living thing.
 - B a large part of an animal or plant that does a very important job.
 - C the part of the body that makes sounds.
 - D another name for a body.

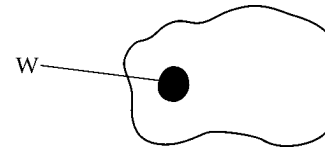
- 2 Organs contain:
- A hearts. B tissues.
 - C glass. D newspaper.

- 3 In the picture, what is part 'Z'?

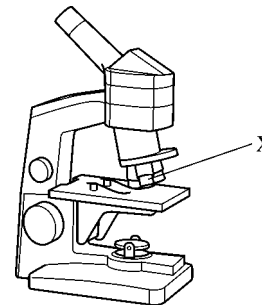


- A stomach B hand
 - C kidney D lung
- 4 What are the kidneys used for?
- A To get rid of waste from the body.
 - B To help us to breathe.
 - C To help us digest food.
 - D To make blood.

- 5 On this drawing of an animal cell, what is part labelled 'W'?

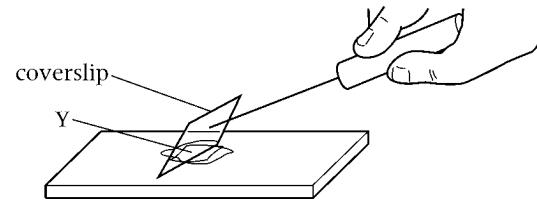


- A cell surface membrane
 - B chloroplast
 - C nucleus
 - D heart
- 6 On the drawing of the animal cell, what does part 'W' do?
- A makes energy B makes food
 - C controls the cell D holds the cell together
- 7 On the drawing of a microscope, what is the name of the part labelled 'X'?



- A stage
- B focusing wheel
- C objective lens
- D base

- 8 Look at the diagram of a slide being made. The object you want to look at ('Y') is called the:



- A specimen. B kingdom.
C stage. D focus.
- 9 A tissue is:
A a collection of organs helping each other.
B another name for an organ.
C a group of cells which are all different, all doing different jobs.
D a group of cells which are the same, all doing the same job.
- 10 A nerve cell has to carry messages around the body quickly. To help it do this it is:
A short and square.
B very small.
C very long.
D able to move around the body.
- 11 A root hair cell is adapted to its job because the root hair:
A is hook-shaped to hold the plant in the ground.
B gives the cell a large surface area to help it absorb water.
C has many chloroplasts to help it make food.
D can move to help the plant move from place to place.

- 12 Cell division is:
A when a cell dies.
B when a cell splits in two.
C when a cell gets larger.
D a difficult sum.
- 13 An organ system is:
A a collection of organs working together to do an important job.
B a collection of tissues that do the same job.
C a collection of organs that help us breathe.
D a way of counting the number of organs in the body.
- 14 The heart contains:
A muscle, fat and nerve tissues.
B only muscle tissue.
C muscle and bone tissues.
D muscle, nerve and palisade tissues.
- 15 Which organ system carries messages around the body?
A digestive system
B breathing system
C circulatory system
D nervous system
- 16 The gullet is part of the:
A digestive system.
B breathing system.
C circulatory system.
D nervous system.